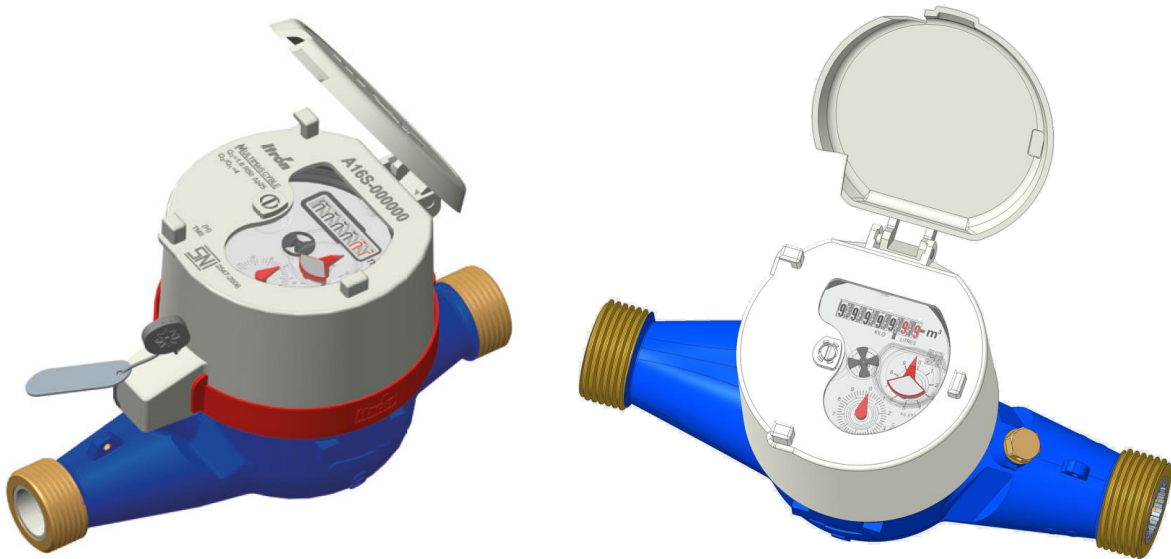


MULTIMAG TM II

VISUAL INSPECTION GUIDE FOR WATER METER
DN15-20 (15-20mm / 1/2"-3/4")



Multimag DN15-20

PT MECOINDO
EJIP Plot 6B-2
Cikarang Selatan, Bekasi 17550
Jawa Barat – INDONESIA
Tel: +62 21 897 0270

WE CREATE A MORE **RESOURCEFUL** WORLD

1. Visual inspection of the water meter

- Packaging
→ Check the packaging when first received. Ensure there are no damaged parts or signs of collision/dropped down/thrown.
- Body part of the water meter
→ Check whether the water meter body is in good condition and there are no scratches/impact marks/other damage to the water meter body.



Left side view



Right side view



Bottom view

→ Check whether the metrology or factory seal is still in good condition and completely intact.

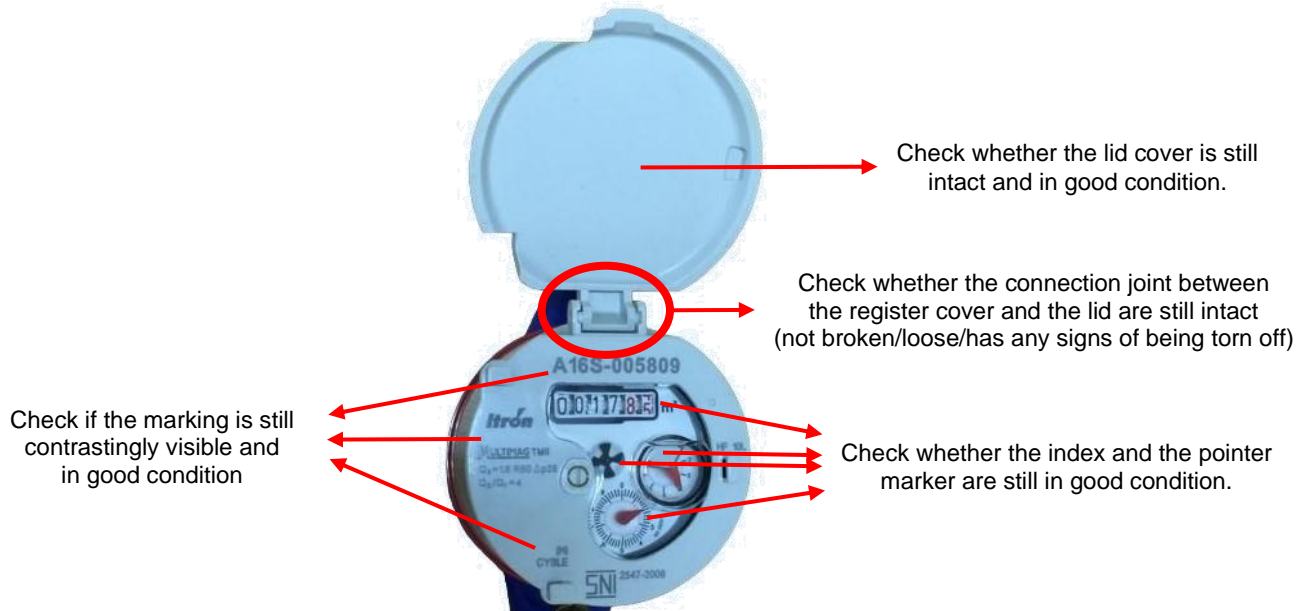


Check whether the seal, plate (tag) and wire are still in good condition (the wire must not be broken/cut)

- Water meter register and cover
→ Check if there is any damage on the register cover and anti-fraud ring (plastic ring between the water meter body and the register). Ensure that the anti-fraud ring is in good condition and there are no signs of forced dismantling (for example, cut/torn sides or glue marks).



Check the anti-fraud ring condition



- Inlet and outlet parts of the water meter
→ Check whether the threads on the inlet and outlet are still in good condition (no dents) or broken signs.



Check if the inlet thread is still in good condition



Check if the outlet thread is still in good condition

→ Check the condition of the filter at the inlet to see if there are any unwanted foreign objects/dirts covering the filter.



Check the condition of the filter at the inlet section to see if it is still intact and clean



Example of the inside part of a clean filter

→ Check using a flash-light for unwanted foreign objects/dirt on the outlet and on the measuring chamber of the water meter. Note: the measuring chamber can be recognized as the plastic part as depicted in the picture below.


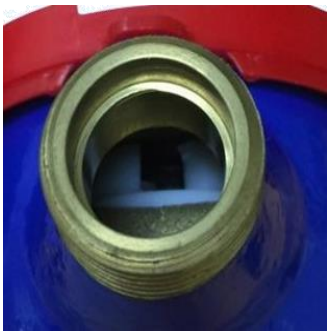






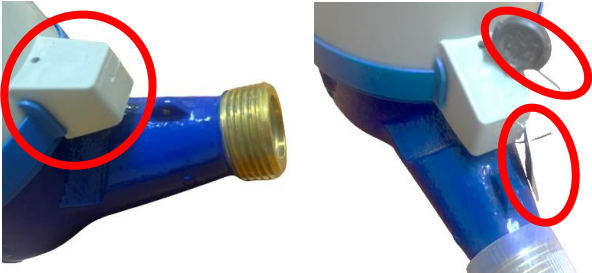

Check the condition of the outlet section to see if it is clean and there is no dirt/object stuck on the measuring chamber.

2. Checking the basic functions of the water meter

1. Flow water through the inlet with a fairly strong flow.
2. Wait for a few moments until the water coming out from the outlet is clean enough.
3. Check the rotation of the pointer to see if it rotates normally or if there is a possibility of disturbance such as pointer and index stop.
4. Blow air into the inlet of the water meter (manual approach should suffice), bring the body of the water meter close to your ear, and listen to the sound of the turbine rotating. If no sound detected, then the turbine is still blocked/jammed and does not rotate properly.
5. Blow air through the inlet of the water meter (manual approach should suffice) and check also whether the pointer and index register rotate smoothly or there is still a disturbance (stopped, jammed or others).
6. Optional: you may also repeat instruction no. 4 and 5 using an air compressor with moderate pressure

3. Some examples of problems with water meters

NOT GOOD	GOOD
<p>There are unwanted foreign objects/dirt attached/stuck on the Measuring Chamber</p> 	<p>Clean measuring chamber and free of unwanted foreign objects</p> 
<p>Broken or cracked register glass</p> 	<p>Register glass in good condition</p> 

NOT GOOD	GOOD
<p>Dirts build up on the filter</p> 	<p>Filter is clean and free of dirt</p> 
<p>The water meter is not completely metrologically/factory sealed or the metrology/factory seal wire is broken/cut/incomplete</p> 	<p>The water meter is well metrologically/factory sealed and the metrology/factory seal is intact</p> 

Please contact your Itron representative if the above inspection steps have been carried out but an issue with the water meter persists.