



# Gas Edge Solutions

## Navigating an industry in transition

Gas edge infrastructure enables better decision-making at the point of service, improving operational efficiency and increasing reliability and resiliency.

### WHY GAS EDGE

A lack of visibility and control at the edge of the gas distribution network limits the utility's ability to ensure safety, reliability, and operational efficiency to the communities they serve.

Itron's Gas Edge solutions are designed to address that gap and drive advancements in gas safety, enhance visibility into gas distribution management, and improve efficiency in how utilities manage natural gas infrastructure.



### GAS UTILITY CHALLENGES



SAFETY CONCERNS



REGULATORY REQUIREMENTS



DECARBONIZATION



BUSINESS CASE



BUDGET CONSTRAINTS



AGING INFRASTRUCTURE

### VALUE OF GAS EDGE SOLUTIONS

A highly performant end-to-end solution for visibility, control and analysis across the gas distribution network.

- 1. SAFETY:** Monitor temperature, high-flow, pressure in near real-time enabling quicker response and pro-active maintenance.
- 2. EFFICIENCY:** Gain operational insights on the health of your gas distribution network while reducing the manual processes.
- 3. COST-OPTIMIZED:** Leverage a combination of cellular and battery-based mesh to balance cost and performance while expanding geographic coverage.
- 4. FUTURE-READY:** Build beyond meter-to-cash operations, unlocking advanced use cases in Gas Distribution Safety on the same network platform.

## ITRON'S GAS EDGE SOLUTIONS PORTFOLIO

Itron's Gas Edge solutions use intelligently connected, cost-effective networking with mesh and cellular to support multiple devices and operational solutions such as ultrasonic metering, Gas Distribution Safety, and methane monitoring.



Billing  
& Settlements



Service Connectivity  
Management



Distribution Integrity  
Management



Customer  
Experience

**OPERATIONS  
OPTIMIZER**

**DATA MANAGEMENT  
(TEMETRA / IEE MDM)**

**GAS DISTRIBUTION  
SAFETY**

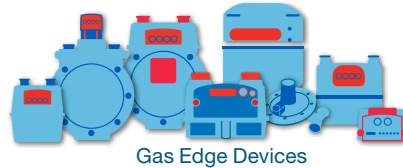
**CUSTOMER  
ENGAGEMENT**

**INTELLIGENT EDGE OPERATING SYSTEM**

**INTELLIGENT  
CONNECTIVITY**

**NETWORK CONTROL PLATFORM**

CONNECTIVITY: MOBILE, BATTERY/ELECTRIC MESH, PRIVATE OR PUBLIC CELLULAR



Gas Edge Devices

**"Utilities need better real-time visibility and control to ensure reliability and safety... simply replacing aging infrastructure, a costly capital investment, isn't enough."**

We strive to be more than just a technology provider. Itron is on a constant learning journey with customers and partners, listening and solving today's and tomorrow's problems. Our focus on delivering high-performing, cost-effective, and innovative technology enables our customers to measure, manage, and control the delivery of gas to create a more sustainable future.

**Learn more at [itron.com](https://www.itron.com).**

### WHY PARTNER WITH ITRON?

Itron is an innovator in the gas industry with the experience and capability to help utilities deliver efficient, reliable, and safe energy and water across the globe. Utilities have depended on us for decades. We have over 85 million gas endpoints installed, and 200 million communication modules deployed under Itron systems, including the largest cellular-only AMI solution in the US. Itron recognizes the need to innovate for our gas utilities, as utility needs are constantly changing, and technology advancements continue to open new doors to solve these challenges.



To learn more visit [itron.com](https://www.itron.com)

**We create a more resourceful world**

While Itron strives to make the content of its marketing materials as timely and accurate as possible, Itron makes no claims, promises, or guarantees about the accuracy, completeness, or adequacy of, and expressly disclaims liability for errors and omissions in, such materials. No warranty of any kind, implied, expressed, or statutory, including but not limited to the warranties of non-infringement of third party rights, title, merchantability, and fitness for a particular purpose, is given with respect to the content of these marketing materials. © Copyright 2024 Itron. All rights reserved. **102069MP-01 10.24**

**Itron**

2111 North Molter Road  
Liberty Lake, WA 99019 USA